

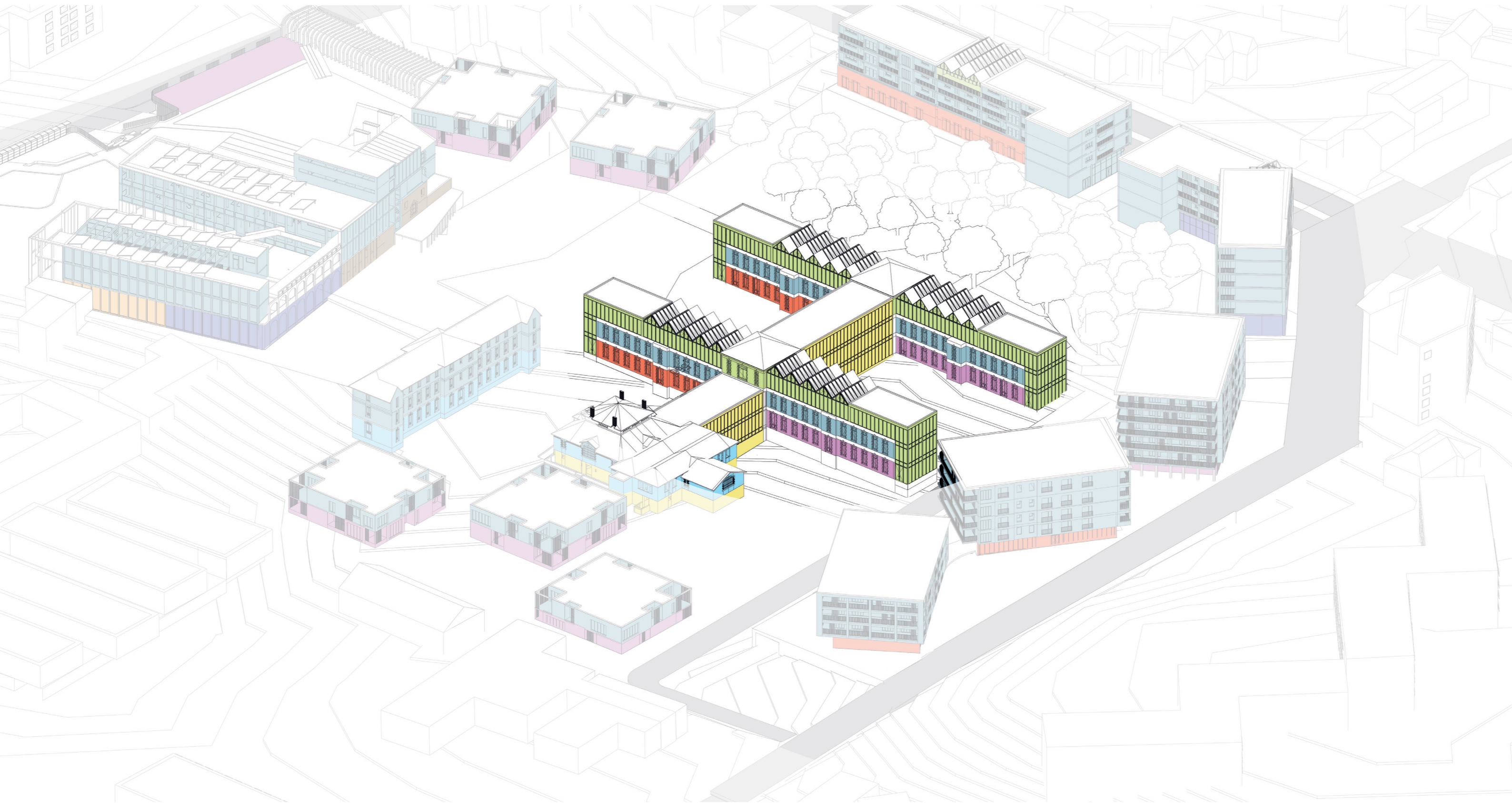
QARE





# CELLULE ACTIVE

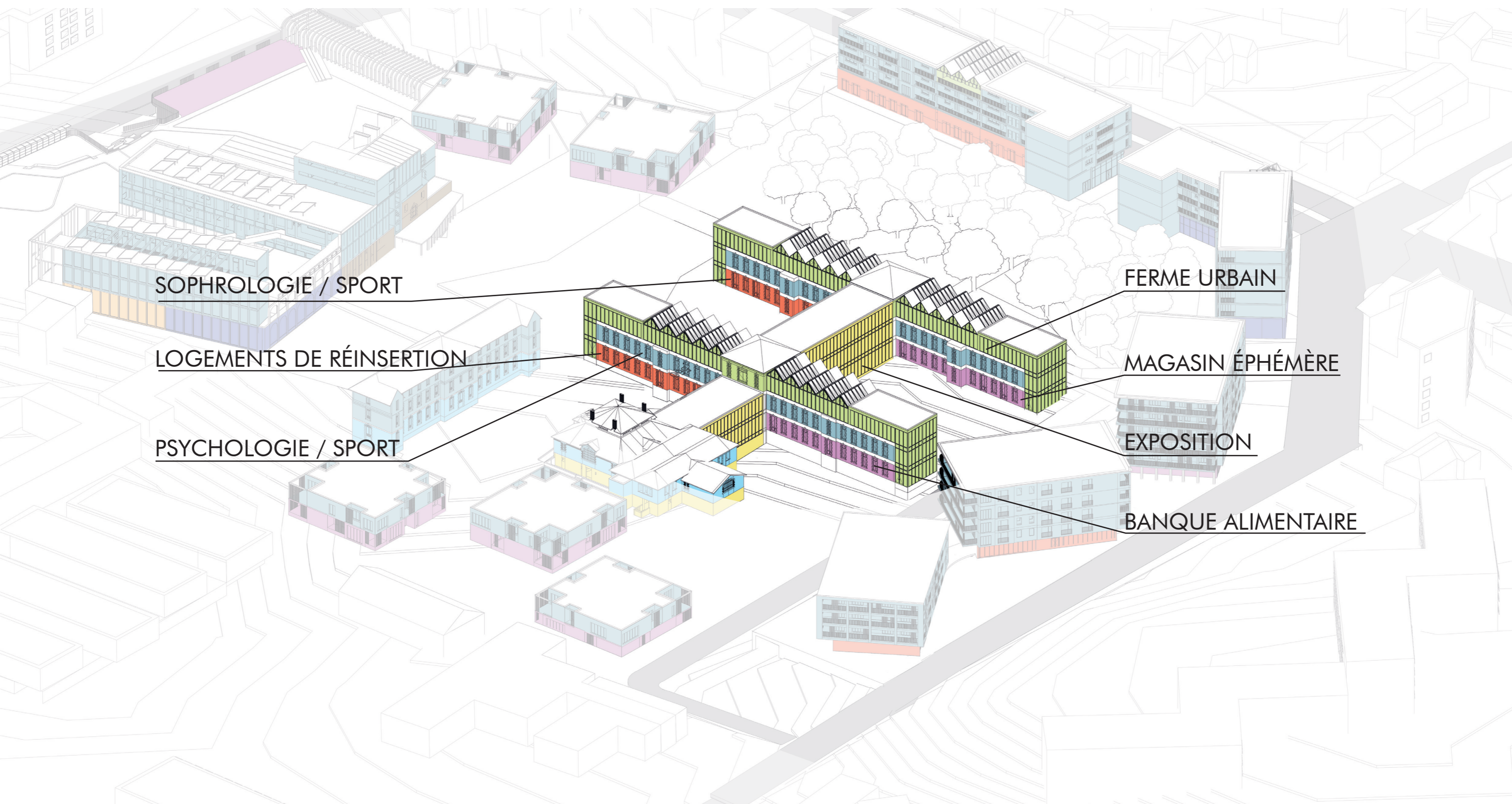
## Programmation





# CELLULE ACTIVE

## Programmation





# CELLULE ACTIVE

## Programmation



Appropriation



Logements



Commerces



Santé



Culture

Grande serre agricole

Serre agricole

Couloir agricole

Passerelle

Logement de réinsertion PMR

Logement de réinsertion

Espace commun

Serre agricole - système technologique

Stockage magasin

Magasin éphémère - banque alimentaire

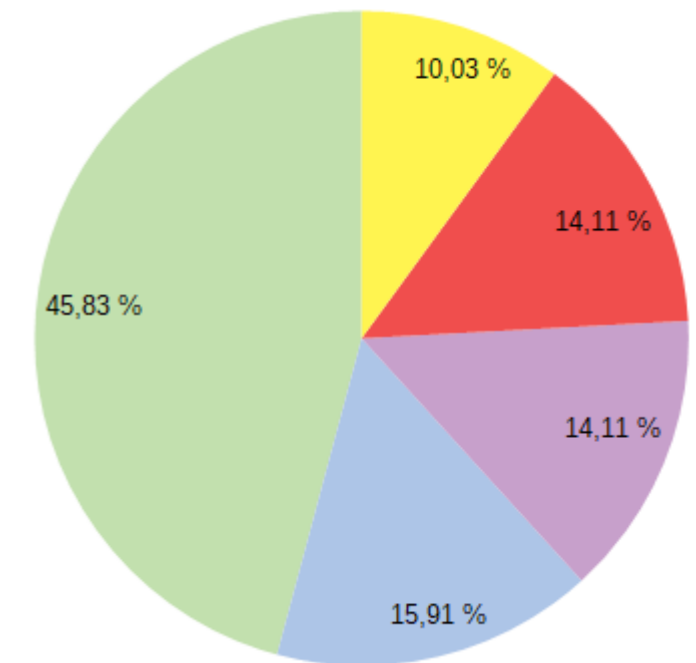
Exposition

Hall - exposition - accès (escaliers + ascenseur)

Vestiaires - 3 douches 3.8m<sup>2</sup>, 3 sanitaires 1.6m<sup>2</sup> et 3m<sup>2</sup>

Salle de sport, gym, sophrologie individuel et/ou collectif

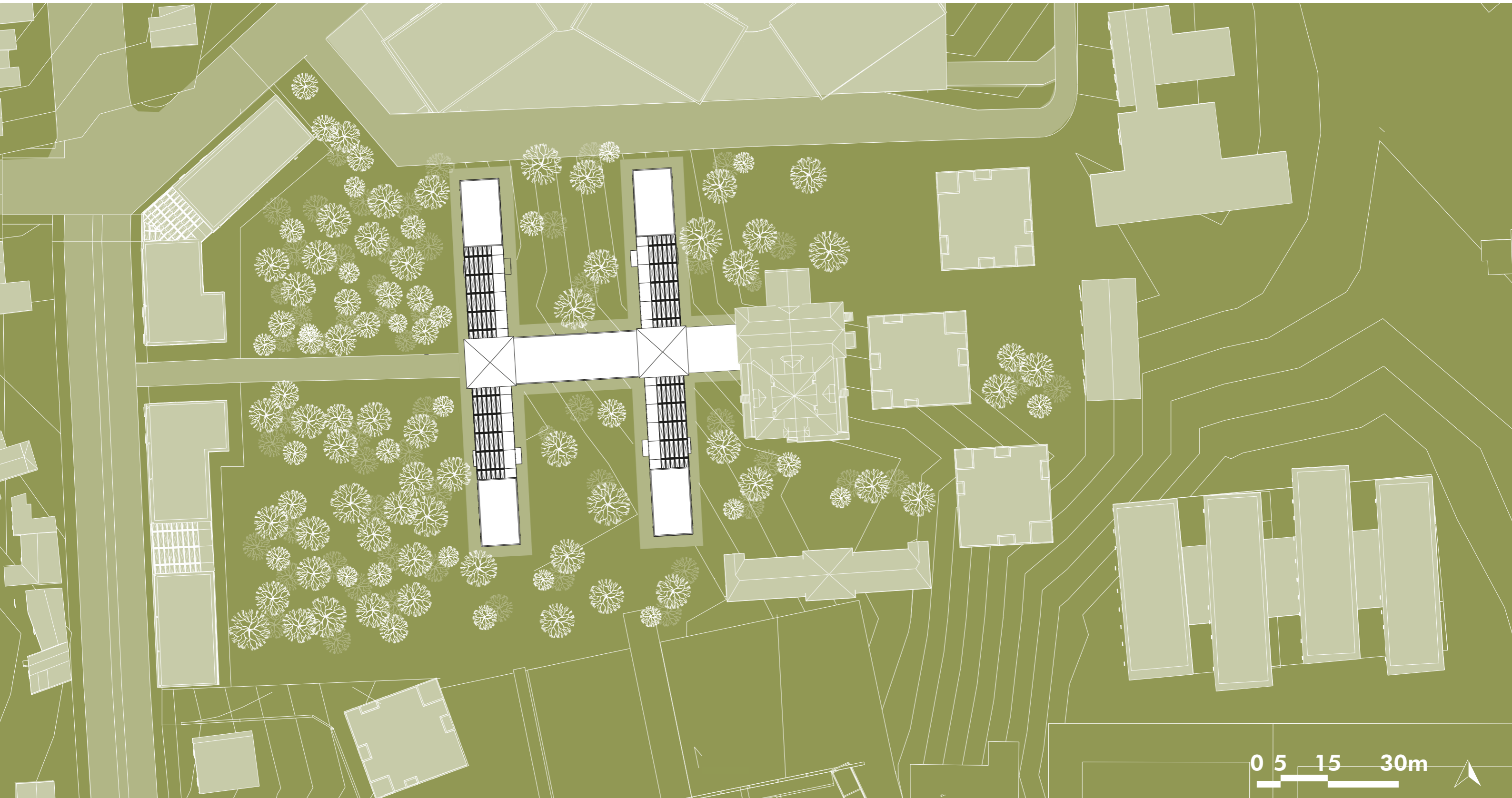
Serre agricole - système technologique





# CELLULE ACTIVE

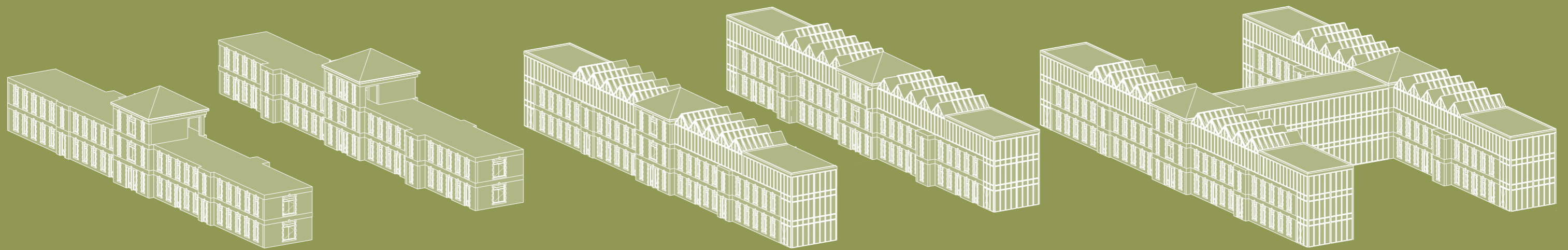
## Cours intérieure





# CELLULE ACTIVE

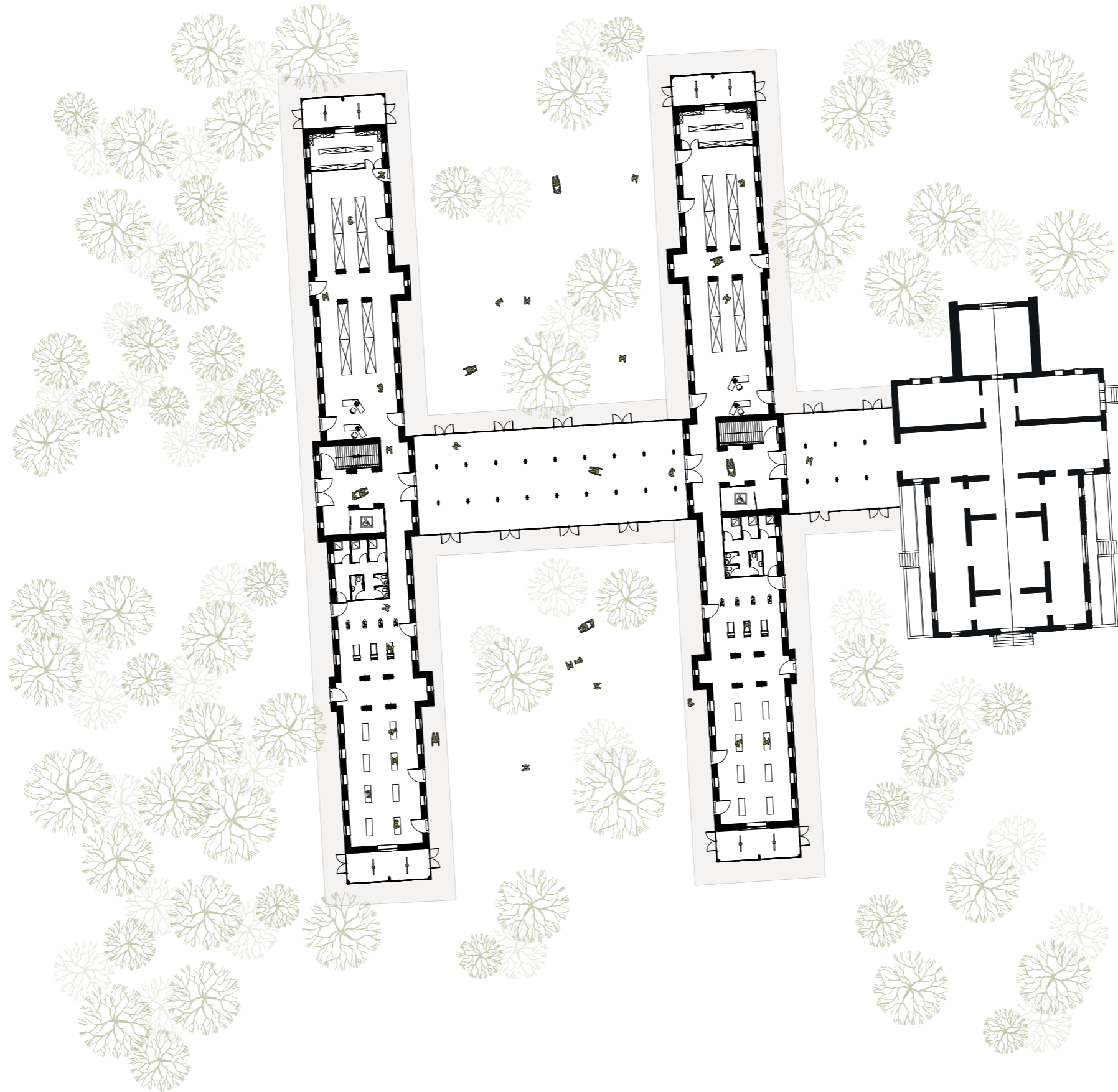
## Cours intérieure





# CELLULE ACTIVE

## Plan RDC



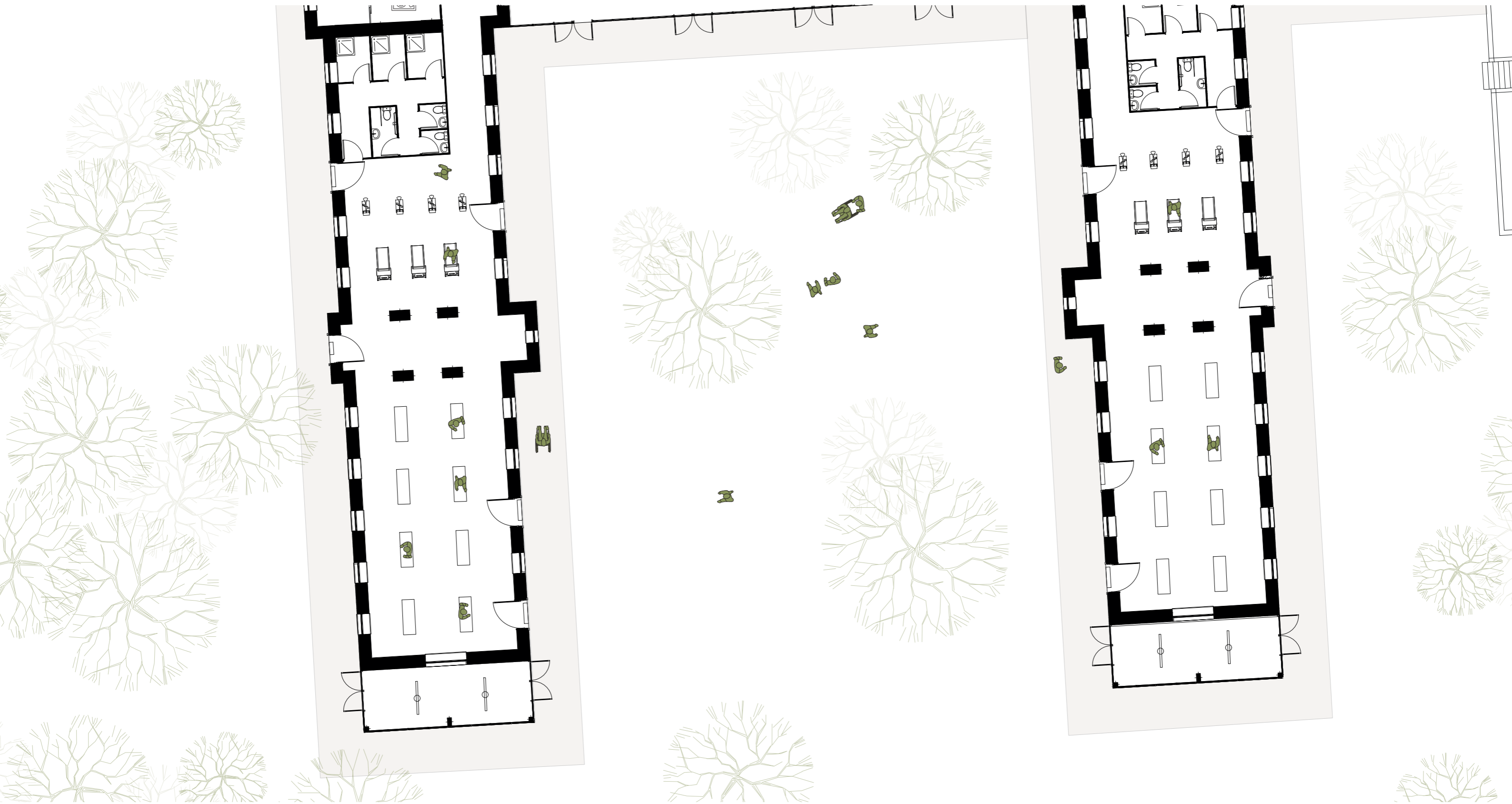
0 5 10 20m





# CELLULE ACTIVE

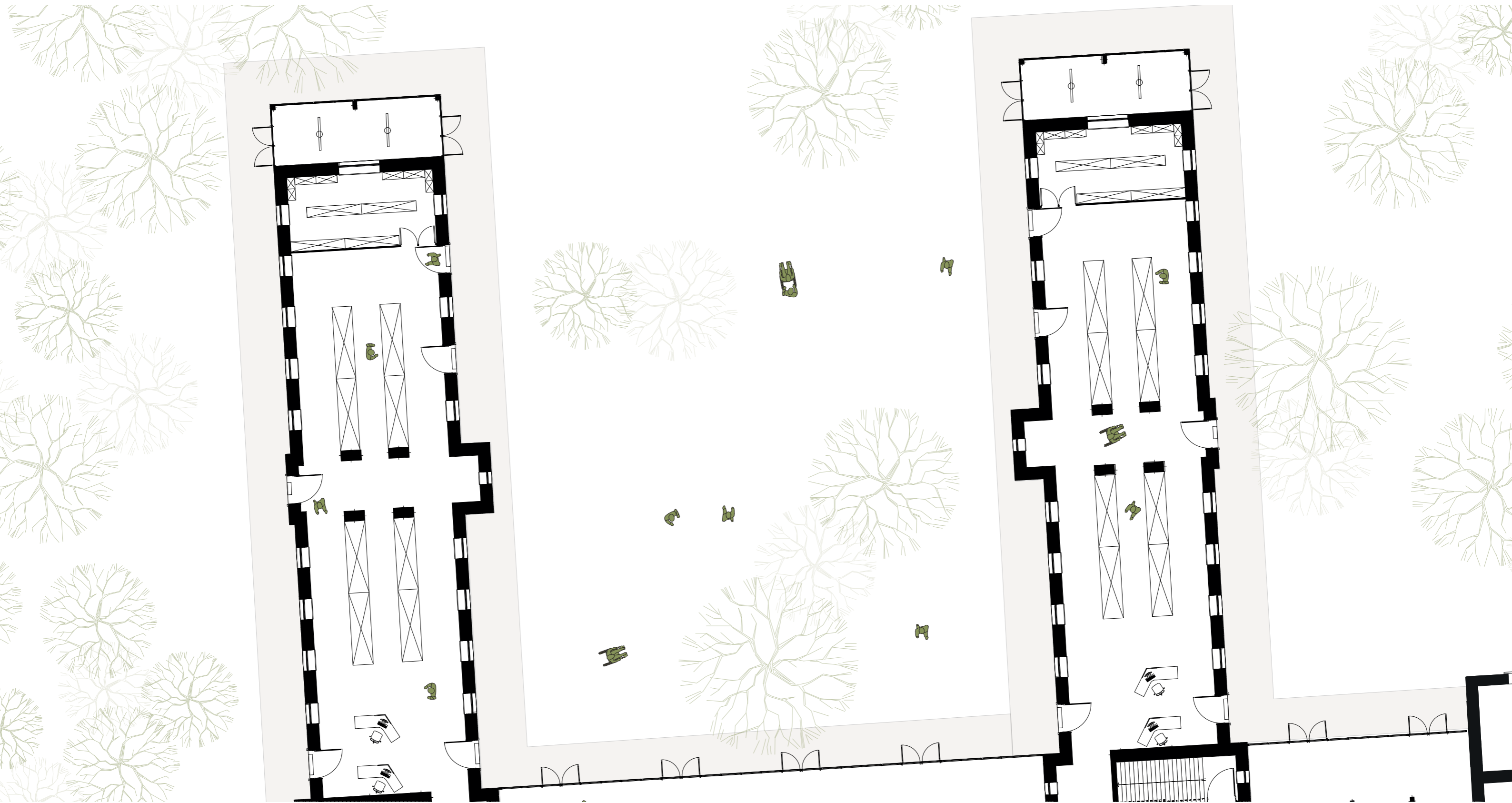
## Plan RDC





# CELLULE ACTIVE

## Plan RDC





# CELLULE ACTIVE

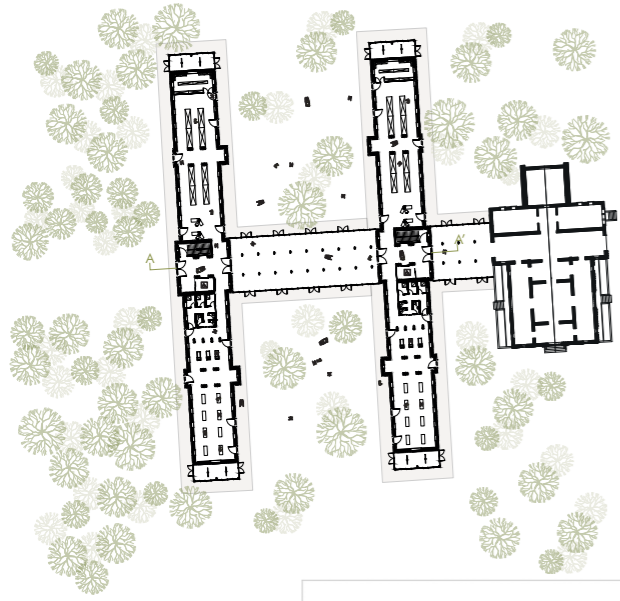
## Cours intérieure





# CELLULE ACTIVE

## Coupe AA'



0

5

10

20



# CELLULE ACTIVE

## Salle d'exposition





# CELLULE ACTIVE

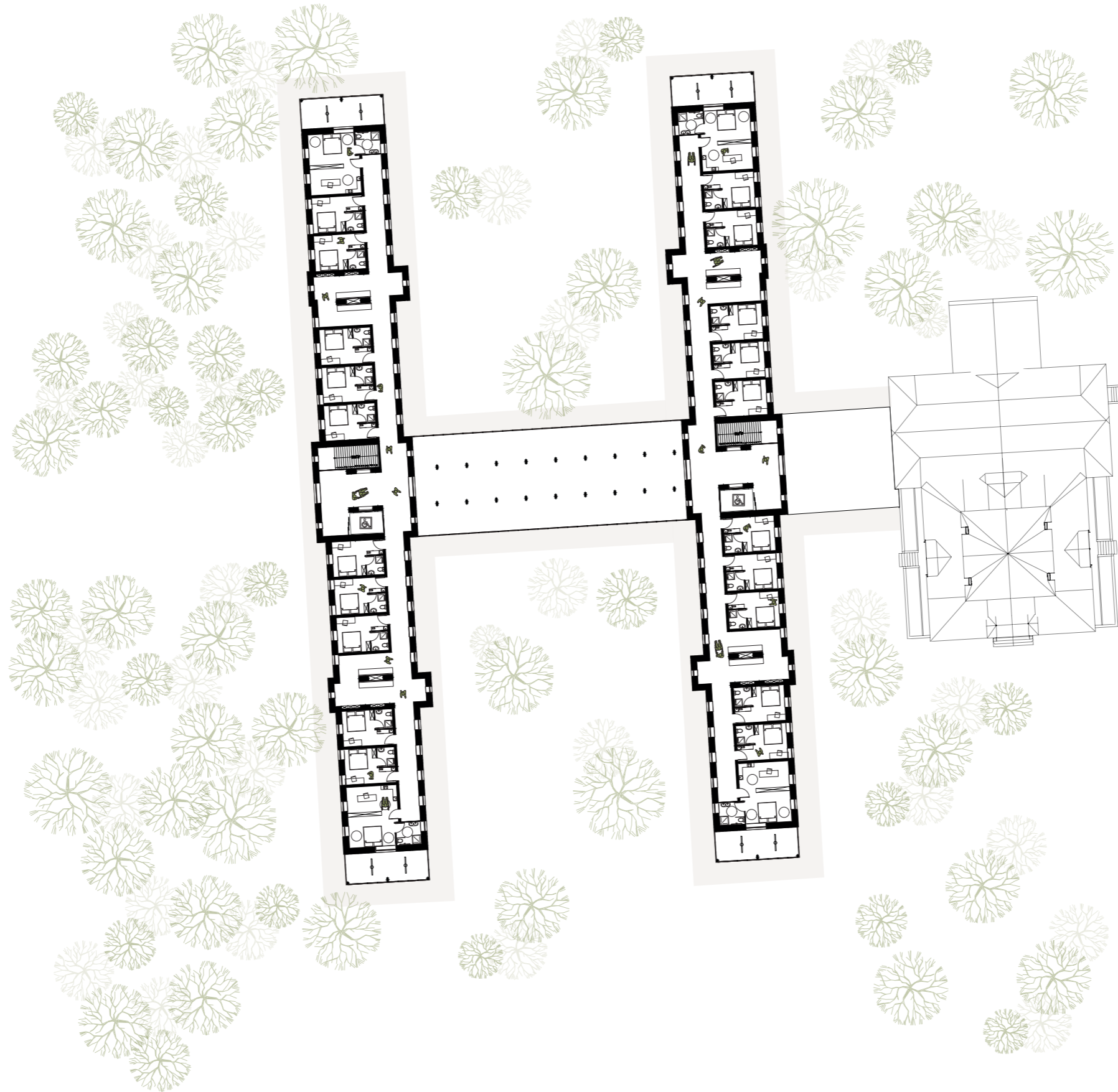
## Entrée ouest





# CELLULE ACTIVE

## Plan R+1



0 5 10 20m





# CELLULE ACTIVE

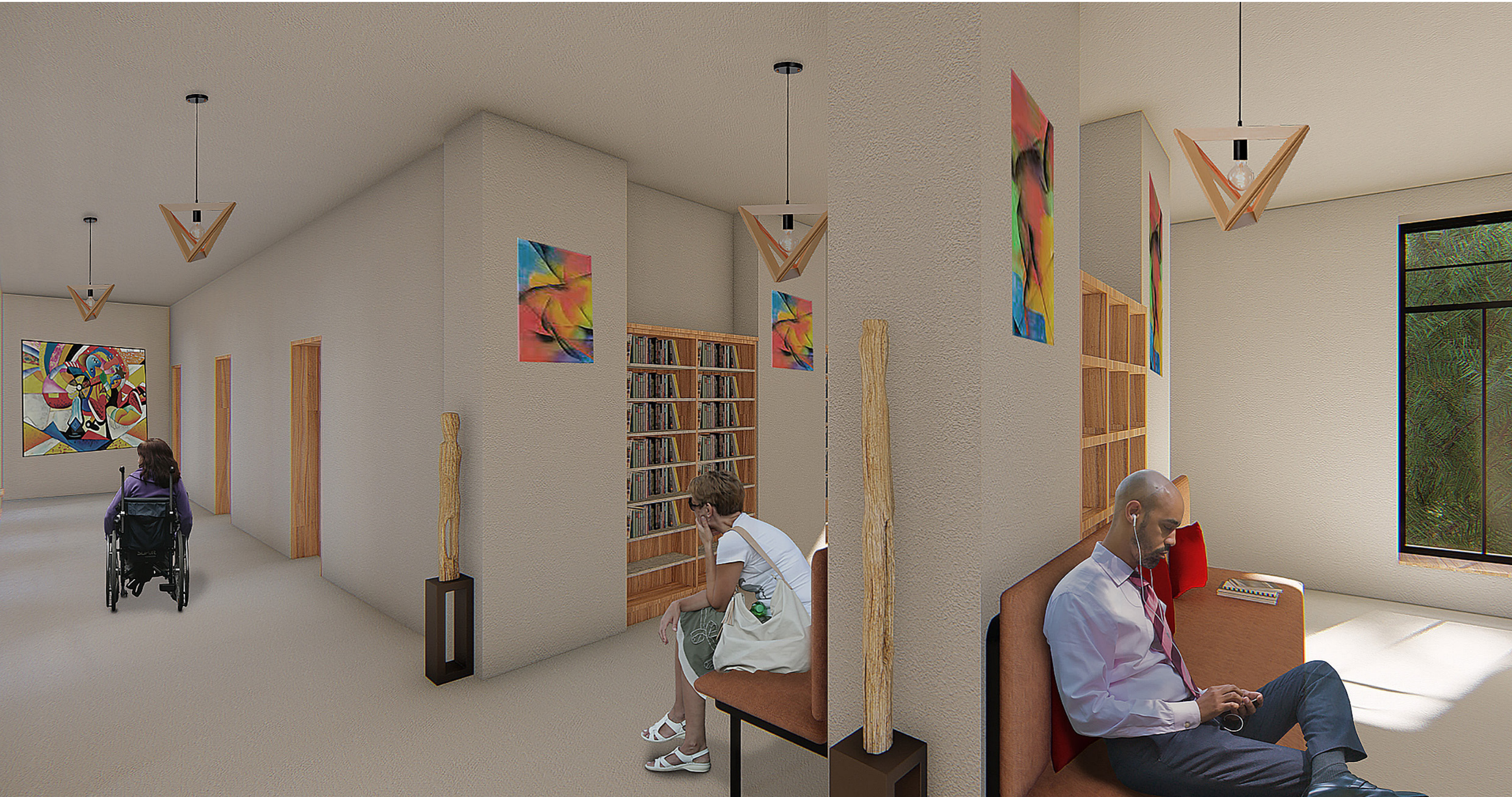
## Plan R+1





# CELLULE ACTIVE

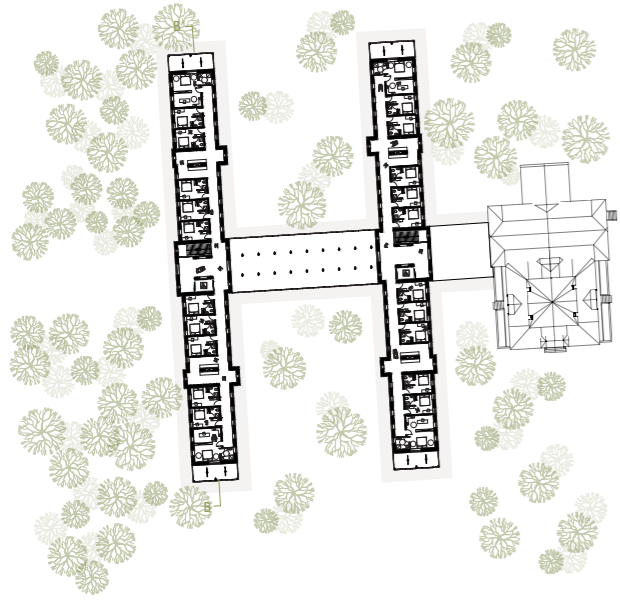
## Espace commun





# CELLULE ACTIVE

## Coupe BB'





# CELLULE ACTIVE

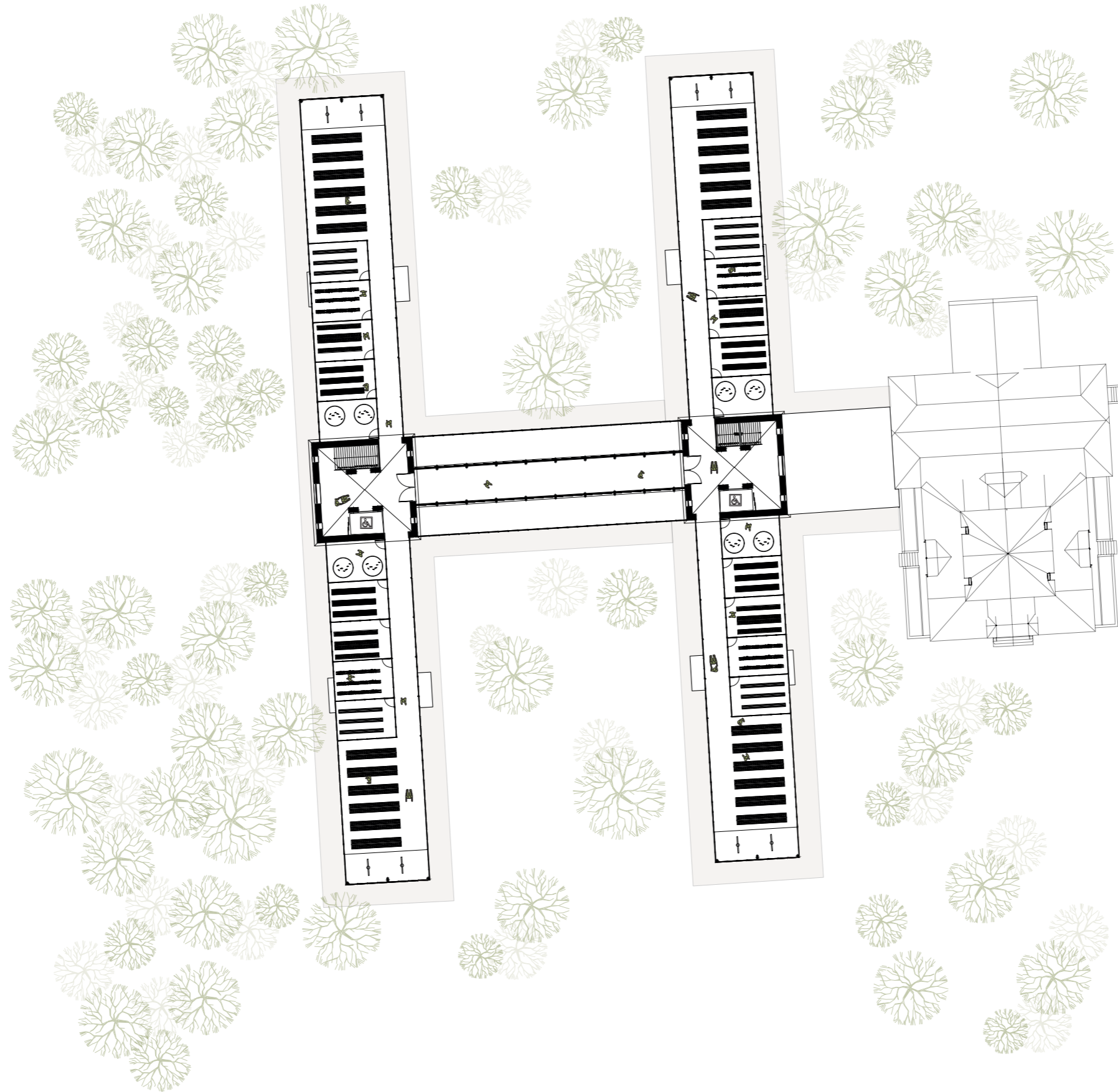
## Logement PMR





# CELLULE ACTIVE

## Plan R+2



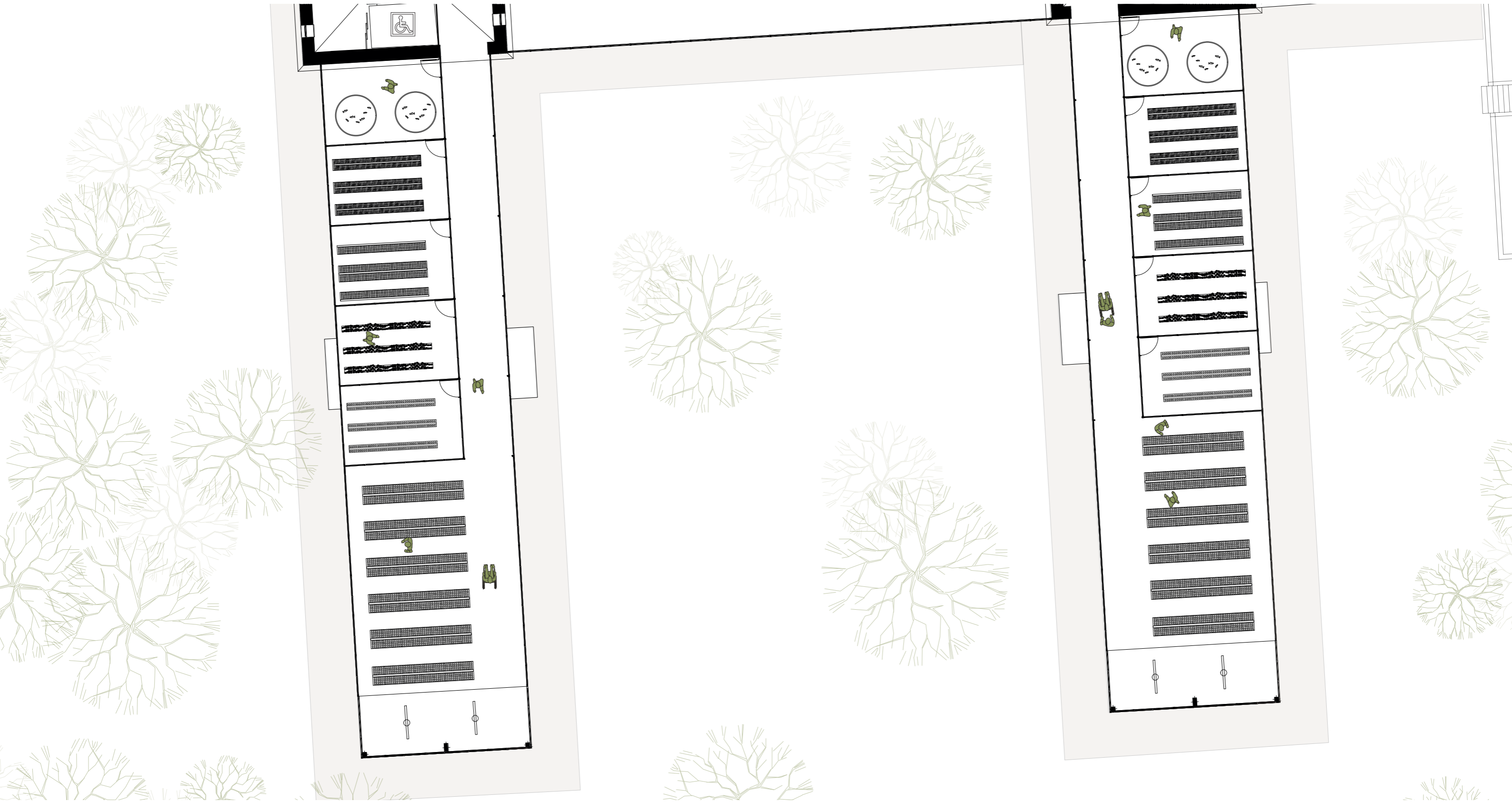
0 5 10 20m





# CELLULE ACTIVE

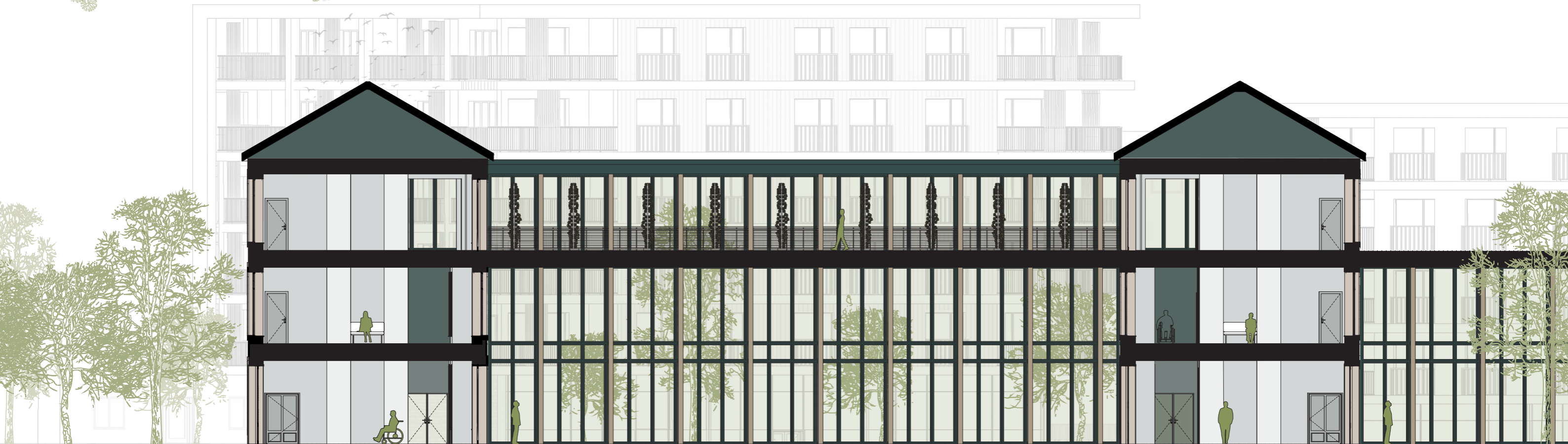
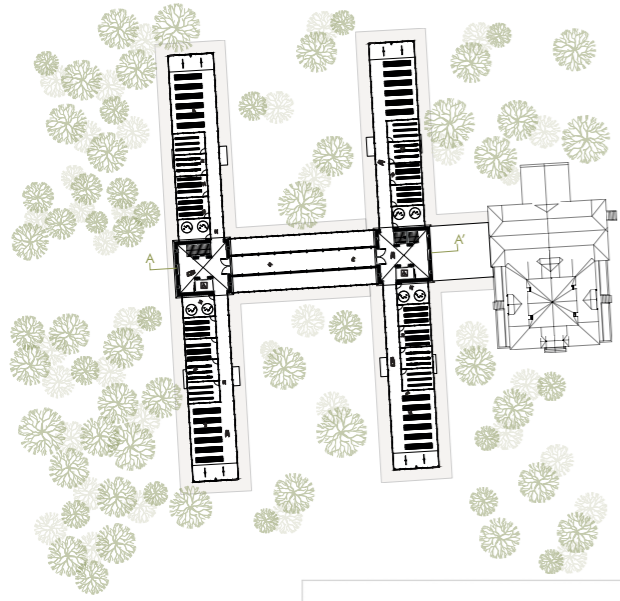
## Plan R+2





# CELLULE ACTIVE

## Coupe AA'



0

5

10

20



# CELLULE ACTIVE

## Agriculture innovatrice





# CELLULE ACTIVE

## Ferme urbaine





# CELLULE ACTIVE

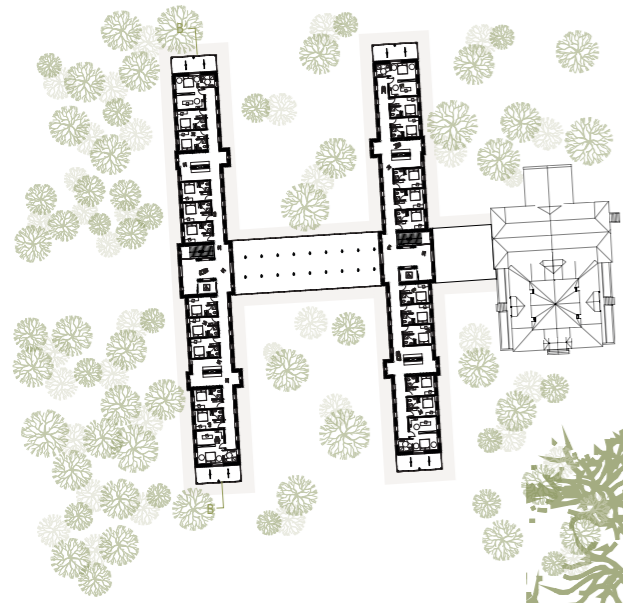
## Ferme urbaine - Aquaponie





# CELLULE ACTIVE

## Coupe BB'





# CELLULE ACTIVE

## Entrée ouest

